

Parkvale Regional Sports Park Lighting Assessment

Filename: Parkvale Regional Sports Park Lighting Assessment.AGI
 Date: 27/03/2017

Design: Paul Wilson, Tech IES

Xyst Limited - paul@xyst.biz

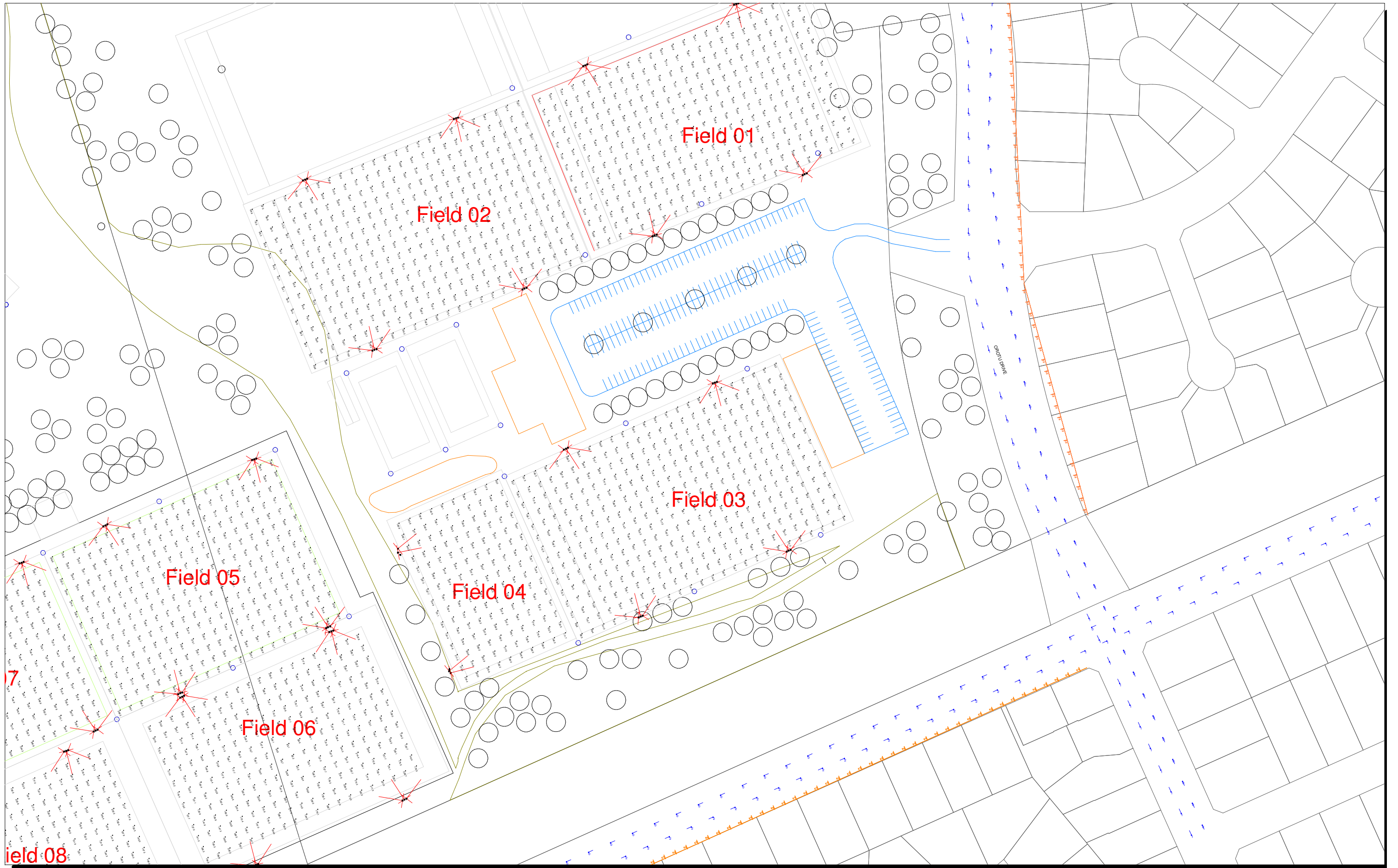
Ph +64 3442 8977 Mobile +64 2744 88062

Revision:

Lighting performance predictions are subject to the accuracies and tolerances in accordance with AS/NZS 3827.1:1998 and AS/NZS 3827.2:1998. These accuracies and tolerances include variances in the building dimensions and obstructions, surface finishes, 3D models, luminaire positioning and aiming, ambient temperature, atmospheric conditions, luminaire photometry, lamp out put, cleaning and maintenance, lighting design software and instrument calibration.

Design copyright Xyst Limited





Parkvale Regional Sports Park Lighting Assessment

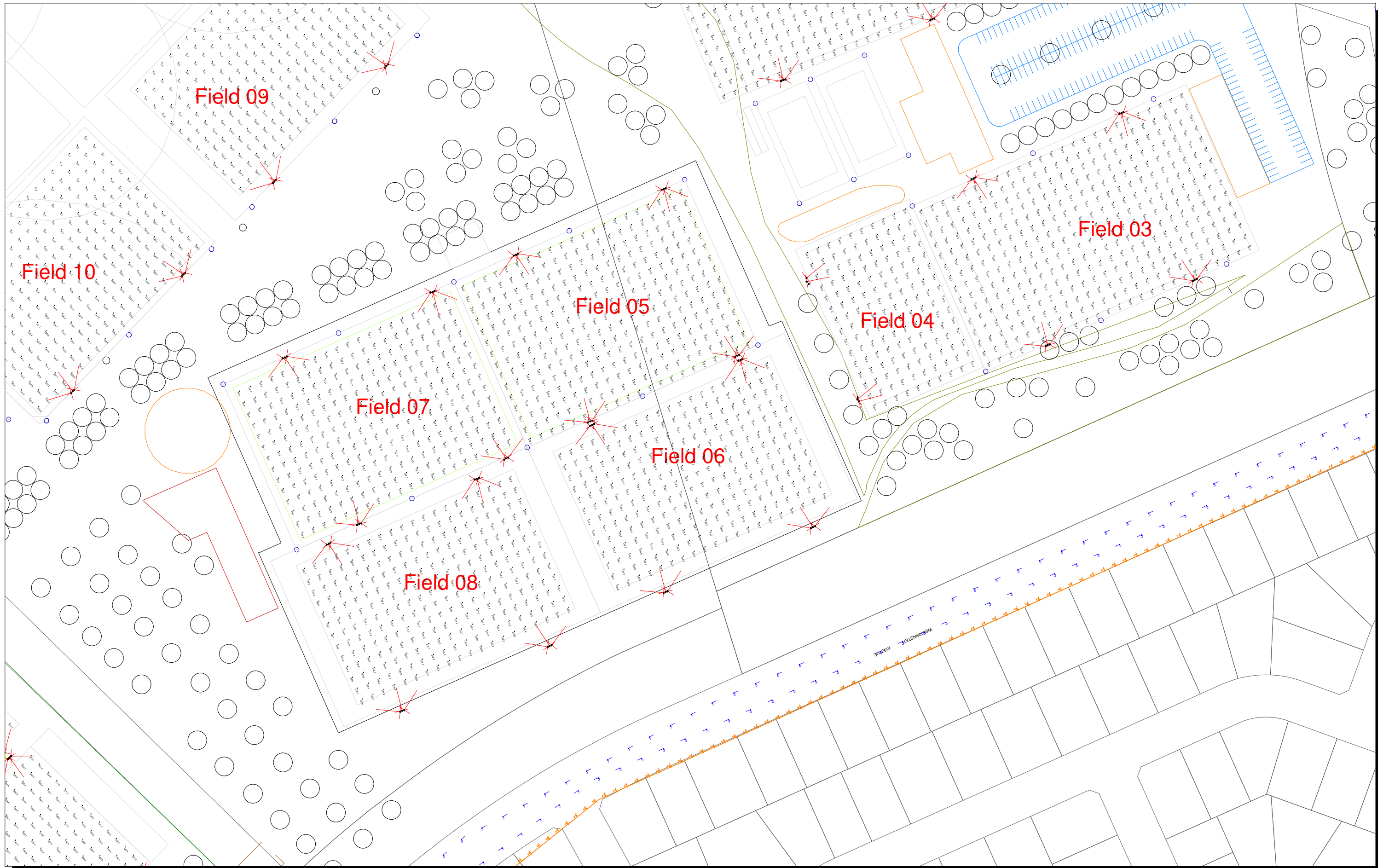
Filename: Parkvale Regional Sports Park Lighting Assessment.AGI
 Date: 27/03/2017

Design: Paul Wilson, Tech IES
 Xyst Limited - paul@xyst.biz
 Ph +64 3442 8977 Mobile +64 2744 88062
 Revision:

Lighting performance predictions are subject to the accuracies and tolerances in accordance with AS/NZS 3827.1:1998 and AS/NZS 3827.2:1998. These accuracies and tolerances include variances in the building dimensions and obstructions, surface finishes, 3D models, luminaire positioning and aiming, ambient temperature, atmospheric conditions, luminaire photometry, lamp out put, cleaning and maintenance, lighting design software and instrument calibration.

Design copyright Xyst Limited





Parkvale Regional Sports Park Lighting Assessment

Filename: Parkvale Regional Sports Park Lighting Assessment.AGI
 Date: 27/03/2017

Design: Paul Wilson, Tech IES
 Xyst Limited - paul@xyst.biz
 Ph +64 3442 8977 Mobile +64 2744 88062
 Revision:

Lighting performance predictions are subject to the accuracies and tolerances in accordance with AS/NZS 3827.1:1998 and AS/NZS 3827.2:1998. These accuracies and tolerances include variances in the building dimensions and obstructions, surface finishes, 3D models, luminaire positioning and aiming, ambient temperature, atmospheric conditions, luminaire photometry, lamp out put, cleaning and maintenance, lighting design software and instrument calibration.

Design copyright Xyst Limited





Parkvale Regional Sports Park Lighting Assessment

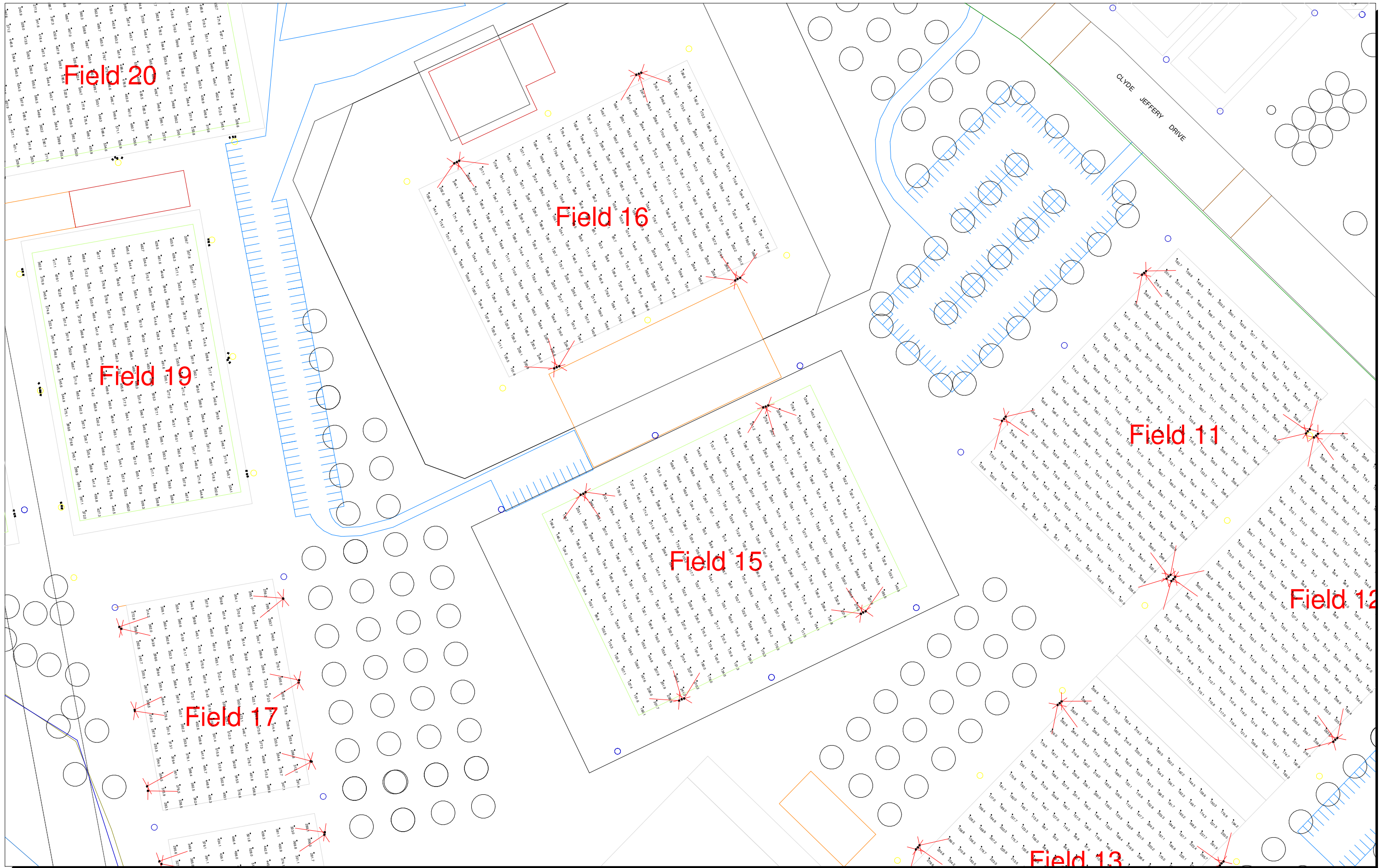
Filename: Parkvale Regional Sports Park Lighting Assessment.AGI
 Date: 27/03/2017

Design: Paul Wilson, Tech IES
 Xyst Limited - paul@xyst.biz
 Ph +64 3442 8977 Mobile +64 2744 88062
 Revision:

Lighting performance predictions are subject to the accuracies and tolerances in accordance with AS/NZS 3827.1:1998 and AS/NZS 3827.2:1998. These accuracies and tolerances include variances in the building dimensions and obstructions, surface finishes, 3D models, luminaire positioning and aiming, ambient temperature, atmospheric conditions, luminaire photometry, lamp out put, cleaning and maintenance, lighting design software and instrument calibration.

Design copyright Xyst Limited





Parkvale Regional Sports Park Lighting Assessment

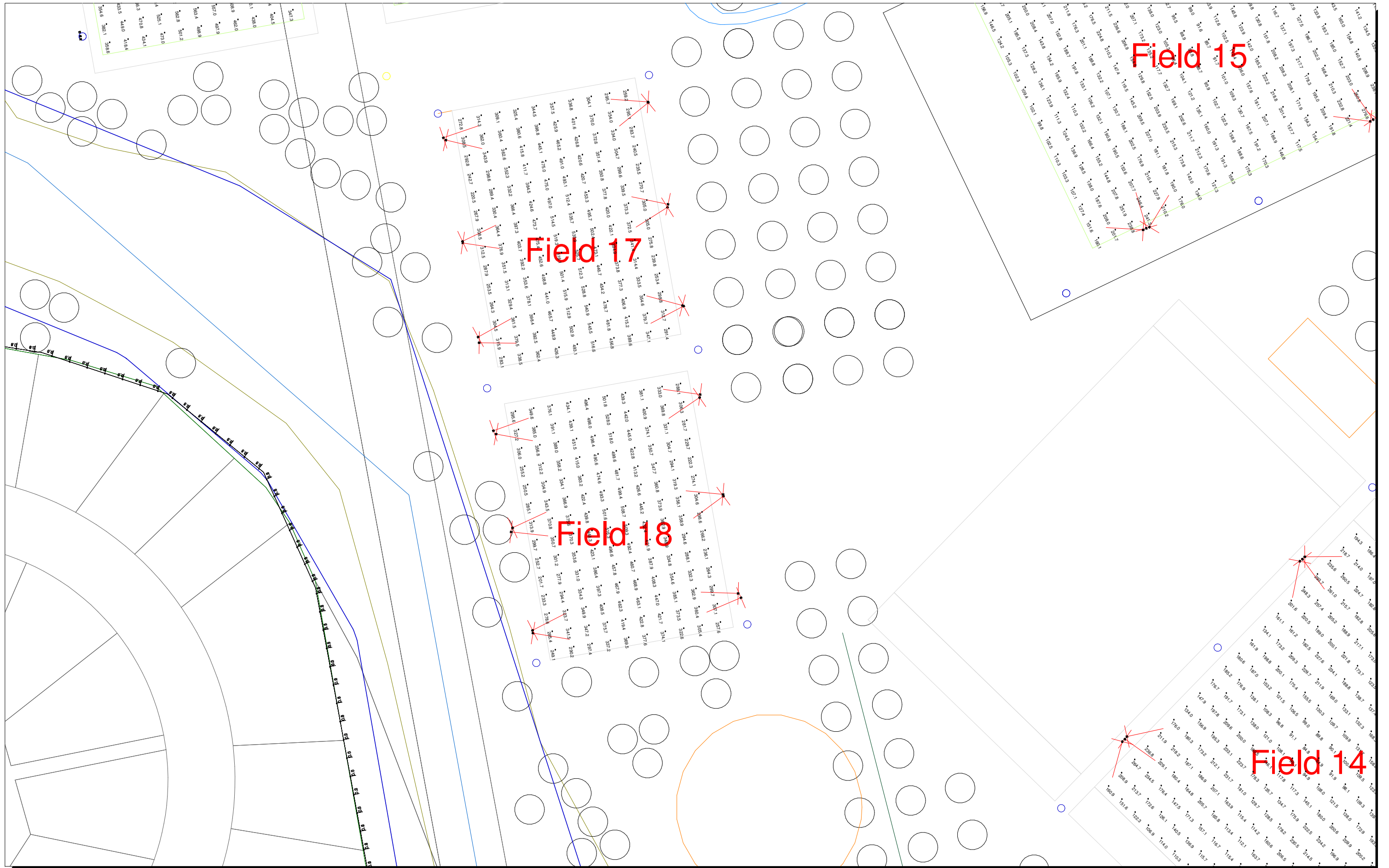
Filename: Parkvale Regional Sports Park Lighting Assessment.AGI
 Date: 27/03/2017

Design: Paul Wilson, Tech IES
 Xyst Limited - paul@xyst.biz
 Ph +64 3442 8977 Mobile +64 2744 88062
 Revision:

Lighting performance predictions are subject to the accuracies and tolerances in accordance with AS/NZS 3827.1:1998 and AS/NZS 3827.2:1998. These accuracies and tolerances include variances in the building dimensions and obstructions, surface finishes, 3D models, luminaire positioning and aiming, ambient temperature, atmospheric conditions, luminaire photometry, lamp out put, cleaning and maintenance, lighting design software and instrument calibration.

Design copyright Xyst Limited





Parkvale Regional Sports Park Lighting Assessment

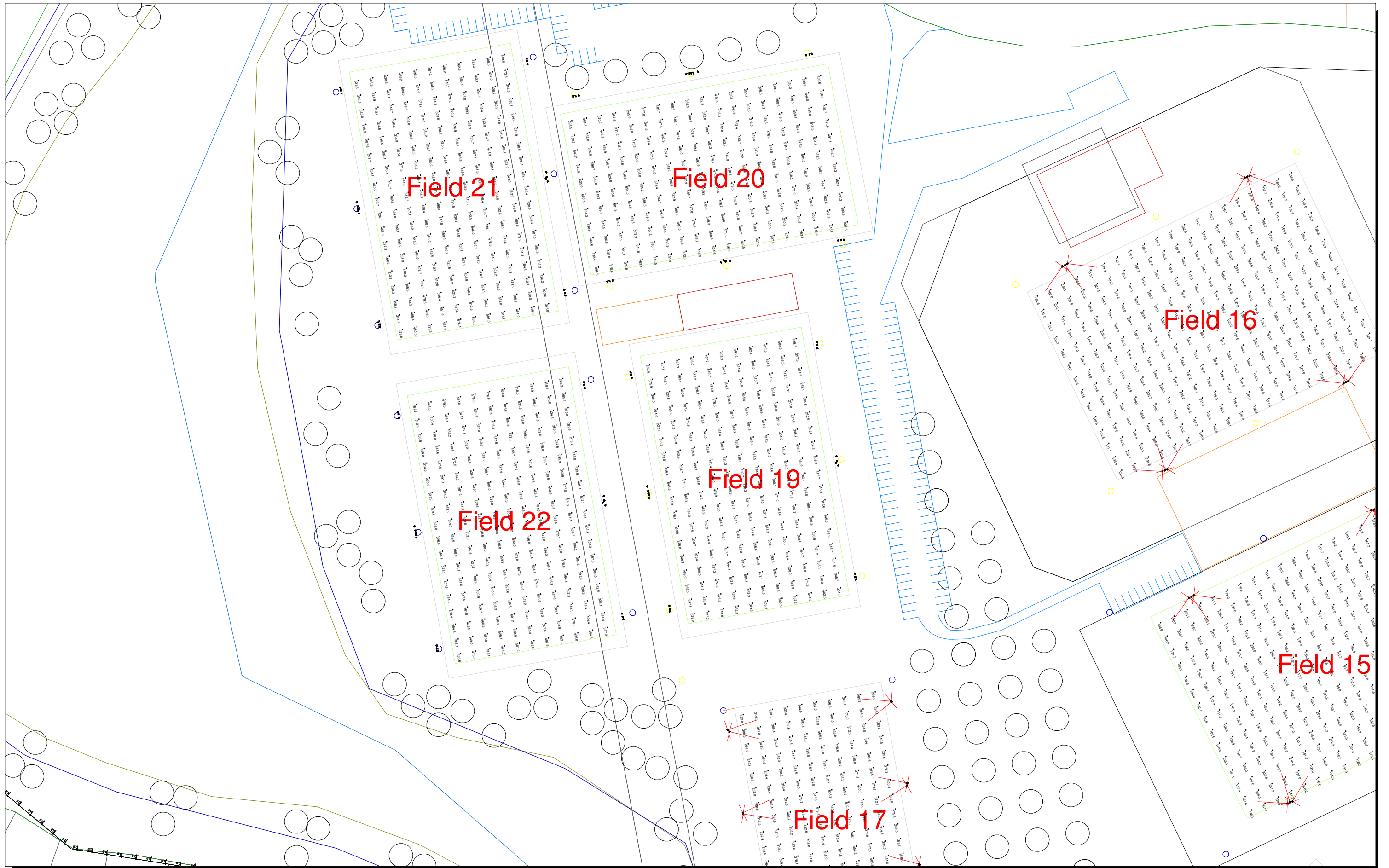
Filename: Parkvale Regional Sports Park Lighting Assessment.AGI
 Date: 27/03/2017

Design: Paul Wilson, Tech IES
 Xyst Limited - paul@xyst.biz
 Ph +64 3442 8977 Mobile +64 2744 88062
 Revision:

Lighting performance predictions are subject to the accuracies and tolerances in accordance with AS/NZS 3827.1:1998 and AS/NZS 3827.2:1998. These accuracies and tolerances include variances in the building dimensions and obstructions, surface finishes, 3D models, luminaire positioning and aiming, ambient temperature, atmospheric conditions, luminaire photometry, lamp out put, cleaning and maintenance, lighting design software and instrument calibration.

Design copyright Xyst Limited





Parkvale Regional Sports Park Lighting Assessment

Filename: Parkvale Regional Sports Park Lighting Assessment.AGI
 Date: 27/03/2017

Design: Paul Wilson, Tech IES
 Xyst Limited - paul@xyst.biz
 Ph +64 3442 8977 Mobile +64 2744 88062
 Revision:

Lighting performance predictions are subject to the accuracies and tolerances in accordance with AS/NZS 3827.1:1998 and AS/NZS 3827.2:1998. These accuracies and tolerances include variances in the building dimensions and obstructions, surface finishes, 3D models, luminaire positioning and aiming, ambient temperature, atmospheric conditions, luminaire photometry, lamp out put, cleaning and maintenance, lighting design software and instrument calibration.

Design copyright Xyst Limited



Calculation Summary					
Label	CalcType	Units	Avg	Max	Min
Illuminance Field 01	Illuminance	Lux	160.51	277.7	73.6
Illuminance Field 02	Illuminance	Lux	161.83	274.5	68.6
Illuminance Field 03	Illuminance	Lux	155.31	273.7	46.2
Illuminance Field 04	Illuminance	Lux	197.55	362.0	90.0
Illuminance Field 05	Illuminance	Lux	198.43	425.8	84.2
Illuminance Field 06	Illuminance	Lux	178.70	353.2	85.1
Illuminance Field 07	Illuminance	Lux	176.27	373.1	78.3
Illuminance Field 08	Illuminance	Lux	178.22	356.4	86.0
Illuminance Field 09	Illuminance	Lux	81.34	266.7	1.1
Illuminance Field 10	Illuminance	Lux	85.21	266.6	0.9
Illuminance Field 11	Illuminance	Lux	172.29	332.5	83.9
Illuminance Field 12	Illuminance	Lux	175.94	340.1	84.7
Illuminance Field 13	Illuminance	Lux	174.71	282.9	85.1
Illuminance Field 14	Illuminance	Lux	173.01	293.7	84.8
Illuminance Field 15	Illuminance	Lux	167.64	276.6	83.8
Illuminance Field 16	Illuminance	Lux	166.57	281.6	85.1
Illuminance Field 17	Illuminance	Lux	383.35	545.5	220.5
Illuminance Field 18	Illuminance	Lux	371.38	528.0	201.7
Illuminance Field 19	Illuminance	Lux	453.03	655.0	198.3
Illuminance Field 20	Illuminance	Lux	459.71	655.2	200.1
Illuminance Field 21	Illuminance	Lux	472.18	682.4	207.6
Illuminance Field 22	Illuminance	Lux	458.64	656.9	209.6
Merlo_III_Seg1	Obtrusive Light - III	Lux	0.23	1.3	0.0
Merlo_III_Seg2	Obtrusive Light - III	Lux	0.48	1.3	0.0
Merlo_III_Seg3	Obtrusive Light - III	Lux	0.43	1.1	0.0
Merlo_III_Seg4	Obtrusive Light - III	Lux	0.41	1.0	0.0
Merlo_III_Seg5	Obtrusive Light - III	Lux	0.18	0.9	0.0
Merlo_III_Seg6	Obtrusive Light - III	Lux	0.05	0.3	0.0
ObtrusiveLight_TI_East Bound_1	Obtrusive Light - TI	%	0.31	1	0
ObtrusiveLight_TI_Northbound	Obtrusive Light - TI	%	1.16	5	0
ObtrusiveLight_TI_Southbound_1	Obtrusive Light - TI	%	0.88	3	0
ObtrusiveLight_TI_West Bound	Obtrusive Light - TI	%	0.26	2	0
Orotu Drive_Cd_Seg1	Obtrusive Light - Cd	N.A.	748.20	2599	25
Orotu Drive_Cd_Seg2	Obtrusive Light - Cd	N.A.	1307	7649	29
Orotu Drive_Cd_Seg3	Obtrusive Light - Cd	N.A.	649.86	2394	24
Orotu Drive_Cd_Seg4	Obtrusive Light - Cd	N.A.	328.13	1091	22
Orotu Drive_Cd_Seg5	Obtrusive Light - Cd	N.A.	178.50	599	17
Orotu Drive_Cd_Seg6	Obtrusive Light - Cd	N.A.	66.16	132	10
Orotu Drive_III_Seg1	Obtrusive Light - III	Lux	0.10	0.3	0.0
Orotu Drive_III_Seg2	Obtrusive Light - III	Lux	0.23	1.0	0.0
Orotu Drive_III_Seg3	Obtrusive Light - III	Lux	0.10	0.4	0.0
Orotu Drive_III_Seg4	Obtrusive Light - III	Lux	0.01	0.1	0.0
Orotu Drive_III_Seg5	Obtrusive Light - III	Lux	0.00	0.0	0.0
Orotu Drive_III_Seg6	Obtrusive Light - III	Lux	0.00	0.0	0.0
Westminster_Cd_Seg1	Obtrusive Light - Cd	N.A.	451.04	1332	21
Westminster_Cd_Seg2	Obtrusive Light - Cd	N.A.	398.31	1158	22
Westminster_Cd_Seg3	Obtrusive Light - Cd	N.A.	313.79	905	24
Westminster_Cd_Seg4	Obtrusive Light - Cd	N.A.	228.98	698	22
Westminster_Cd_Seg5	Obtrusive Light - Cd	N.A.	115.76	469	12
Westminster_III_Seg1	Obtrusive Light - III	Lux	0.13	0.5	0.0
Westminster_III_Seg2	Obtrusive Light - III	Lux	0.10	0.4	0.0
Westminster_III_Seg3	Obtrusive Light - III	Lux	0.08	0.2	0.0
Westminster_III_Seg4	Obtrusive Light - III	Lux	0.03	0.2	0.0
Westminster_III_Seg5	Obtrusive Light - III	Lux	0.00	0.1	0.0

LLF = 1 for spill light calculation purposes

Standard 120 x 70m field configuration 3 x 2KW Metal halide x four poles 18.5m poles (2 per side)

Parkvale Regional Sports Park Lighting Assessment

Filename: Parkvale Regional Sports Park Lighting Assessment.AGI
Date: 27/03/2017

Design: Paul Wilson, Tech IES

Xyst Limited - paul@xyst.biz

Ph +64 3442 8977 Mobile +64 2744 88062

Revision: Client Release

Lighting performance predictions are subject to the accuracies and tolerances in accordance with AS/NZS 3827.1:1998 and AS/NZS 3827.2:1998. These accuracies and tolerances include variances in the building dimensions and obstructions, surface finishes, 3D models, luminaire positioning and aiming, ambient temperature, atmospheric conditions, luminaire photometry, lamp out put, cleaning and maintenance, lighting design software and instrument calibration.

Design copyright Xyst Limited

