

Hawke's Bay Museums Trust

Annual Report

for the year ended 30 June 2023



Hawke's Bay Museums Trust
Ruawharo Tā-ū-rangi



Image: **Raising funds for Earthquake relief in Christchurch**, 1930s, collection of Hawke's Bay Museums Trust, Ruawharo Tā-ū-rangi, 2023/2/17. Public Domain

Cover Image: **Gravity MRR (Red)**, 1999, **Neil Frazer (b.1961)**, gifted by Neil Frazer. Courtesy of Milford Galleries Dunedin, reproduced by Kind Permission of Neil Frazer and Milford Galleries Dunedin, Collection of Hawke's Bay Museums Trust, Ruawharo Tā-ū-rangi, 2022/34. All Rights Reserved.

Contents

Hawke's Bay Museums Trust	4
Chairman's Report	5
Entity Information	6
Statement of Financial Position	7
Statement of Financial Performance	8
Statement of Movements in Equity	9
Statement of Cash Flows	10
Notes to the Financial Statements	11
Statement of Intent	22
Independent Auditor's Report	25
Appendix I List of Acquisitions	29

The Hawke's Bay Museums Trust works to protect, maintain and develop a regional collection that is acknowledged nationally as an outstanding reflection of Hawke's Bay's history and heritage.

Hawke's Bay Museums Trust

The Hawke's Bay Museums Trust (HBMT) holds one of the most significant regional collections in New Zealand, collected over 150 years. The collection comprises a wide range of treasures documenting the unique culture and heritage of the Hawke's Bay region.

The Hawke's Bay Museums Trust works to protect, maintain and develop a regional collection that is acknowledged nationally as an outstanding reflection of Hawke's Bay's history and heritage.

The Trust's mission is to hold, protect and develop the collection for the people of the Hawke's Bay in a manner that promotes understanding of, and interest in, our cultural heritage and the arts.

The Hawke's Bay Museums Trust provides value through:

- » A regional focus allowing economies of scale and a collection of national significance.
- » Political neutrality.
- » Independent stewardship on behalf of the Hawke's Bay community and future generations.
- » Charitable status that encourages funding support.
- » A governance structure that enables input from key stakeholders including funding councils, iwi, friends and the wider community.

The Hawke's Bay Museums Trust focuses on four main goals. These goals are pursued in accordance with Museum Industry Standards (MIS).

1. To protect the collection through appropriate:

- » Storage
- » Security
- » Records Management

2. To maintain and enhance the quality of the collection through appropriate:

- » Conservation
- » Accessioning
- » Deaccessioning

3. To maximise access to the collection through:

- » Exhibitions - at the Hastings City Art Gallery and MTG Hawke's Bay
- » Faraday Centre and other institutions as appropriate
- » Research - based on the Hawke's Bay Museums Trust collection
- » Archives - at MTG Hawke's Bay

4. To further develop the collection through:

- » Fundraising - by working with the Hawke's Bay Museums Foundation
- » Reserves and bequests - that are strategically and appropriately budgeted and managed
- » Relationships - that are fostered and managed to support the ongoing development of the collection.

Chairman's Report



The Joint Working Group continues to progress the development of the new long-term access and storage facility to hold, protect and share the large and important regional collection, for which the Trust is kaitiaki. Fundraising has achieved \$21.194 million to date (\$14.544 million from external funds and \$6.65 million equally shared between Napier and Hastings Councils) with a further \$850,000 target for the Trust to fundraise. Contractor pricing came in higher than expected and a value engineering process is underway to see where costs can be reduced without compromising the project. Detailed designs are completed and building consent has been issued. Physical works are projected to commence in September 2023 with an 18 month programme of works.

MTG Hawke's Bay, Tai Ahuriri, started the year with reduced visitor numbers under Covid-19 restrictions and ongoing caution once restrictions were lifted, however numbers were trending positively by December 2022. Cyclone Gabrielle hit in February 2023 and the museum was closed for three weeks, reopening on 6 March. The museum supported the community following Cyclone Gabrielle through assisting with boxes for unearthened koiwi, providing advice for marae and individuals with affected taonga and other treasures, providing space for displaced Eastern Institute of Technology students and tutors, providing a space to capture people's feelings, thoughts and experiences, creating a Messages of Love programme, along with many staff participating in the Council emergency response immediately following the cyclone. The impact of Cyclone Gabrielle and Covid-19 restrictions have affected both visitor numbers and revenue.

There were two collection-based exhibitions which opening during the year. Silver Shadows: the story of Marineland looked at the impact and controversy of this once very popular tourist attraction in Hawke's Bay. Finding Refuge in Fashion: Minh Ta shares the story of a locally connected fashion designer, Minh Ta, and her journey from Viet Nam to New Zealand as a refugee to becoming a multi award winning fashion designer in Aotearoa. A small display of works from the collection acknowledged the passing of Queen Elizabeth II in September 2022.

There were a number of donations from the community this

year including: a piupiu, earthquake images, Marineland images and memorabilia, freezing work images, Gravity MRR (Red) by Neil Frazer, and a substantial collection of Jillian Ramage works. The Hawke's Bay Museums Trust purchased two artworks - Omarunui and Otatara Pa by Russ Flat, a number of earthquake images from the Fairfax Archives, five René Lalique vases and a series of cyclone relief t-shirts. The MTG Foundation gifted a number of works to the collection including; Billy Apple® (T147) by Billy Apple, Langeudoc by René Lalique, Tapa Tenderizer comb and stand by Selina Shanti Woulfe, Katinia by Serene Hodgman, Mahuru by Maioha Kara, and Pungapunga by Atareta Rerekohu Black. Conservation treatment was completed on painting Gulf of Venice [69/189], painting Filosofo Che Getta I Denari in Mare [6152] and ceramic Rashington Palace II [2020/39/1]

The Trust has once again upheld a stable financial position over the course of the year. The rise in interest rates continues to have a positive impact on interest income, with an increase of \$14,843 compared to the previous year. Additionally, donation income has doubled in comparison to the previous year. Notably, donation income from acquisitions has seen a significant surge (2023: \$173,075, 2022: \$13,300), with this income accurately representing the value of items generously gifted to the Trust.

The Trust wishes to thank both Napier City Council and the Hastings District Council for their continuing financial and other support in particular the progress of the Joint Working Group on the building project to provide for the long-term care and protection of the collection. The Trust recognizes the continued work of the Director and her staff at MTG in managing and displaying the collection. These have been difficult times and the Trust is grateful for their commitment.

Dr. Richard Grant

Entity Information

FOR THE YEAR ENDED 30 JUNE 2023

Legal Name

Hawke's Bay Museums Trust (Incorporated) - (the Trust).

Type of Entity and Legal Basis

The Hawke's Bay Museums Trust (Incorporated) is registered under the Charitable Trusts Act 1957 and is registered as a charitable entity under the Charities Act 2005 (Registration Number CC24406).

The Trust is controlled by Hastings District Council and Napier City Council, and is a council-controlled organisation as defined by in Section 6 of the Local Government Act 2002.

The registered office of the Trust is at the MTG, Herschell Street, Napier.

The Trust's General Objectives

To hold and protect its collection, known as 'The Regional Collection,' for the people of Hawke's Bay.

To encourage the development of quality cultural facilities capable of accessing or drawing upon the collection within Hawke's Bay.

To advance and promote cultural heritage and the arts through the use of the collection.

To oversee collection management through the development of collection policy, conservation and risk management strategies via a contract for services with Napier City Council.

To oversee collection development through the regulation of the acquisition and disposal of collection items.

To manage the bequests vested in the Trust in a way in which maximises benefit to the collection.

Structure of the Trust's Operations

The trust comprises of a Board of five trustees who oversee the governance of the Trust. The trustees are appointed as follows:

One appointed by the Napier City Council (Councillor Tania Wright);

One appointed by the Hastings District Council (Councillor George Lyons);

One appointed by the Hawke's Bay Museums Foundation Charitable Trust Incorporated (Jeanette Kelly);

One appointed by Ngati Kahungunu Iwi Incorporated (Nigel How);

The Chairperson (Richard Grant) who is jointly appointed by Hastings District Council and Napier City Council.

The Trust's administrative and accounting functions are conducted by Napier City Council through a negotiated 'Contract for Service.'

Main Sources of the Trust's Cash and Resources

The Trust receives operating grants from Hastings District Council and Napier City Council. Funds are also received from donations, and interest income on the Trust's investments, which are applied to acquisitions, restoration work and other Trust initiatives by way of special funds.

Statement of Financial Position

AS AT 30 JUNE 2023

	Note	2023 \$	2022 \$
Current Assets			
Bank accounts and cash	4	51,885	59,093
Investments	5	615,260	615,553
Accounts receivable and accrued revenue	6	9,986	18,154
GST receivable		1,648	775
Total Current Assets		678,779	693,575
Non-Current Assets			
Artworks and collection	7	31,021,258	29,886,765
Total Non-Current Assets		31,021,258	29,886,765
Total Assets		31,700,037	30,580,340
Current Liabilities			
Accounts payable and accruals	8	5,780	12,232
Unspent grants	9	21,617	17,267
Total Current Liabilities		27,397	29,498
Non-Current Liabilities			
Trust funds held on behalf	10	75,260	75,260
Total Non-Current Liabilities		75,260	75,260
Total Liabilities		102,657	104,758
Accumulated Funds			
Retained earnings	11	1,984,700	1,780,634
Asset revaluation reserve	11	29,091,778	28,161,858
Special funds	11 & 12	520,903	533,091
Total Accumulated Funds		31,597,381	30,475,582
Total Funds Employed		31,700,038	30,580,341

Roundings

Numbers in the financial statements and notes to the accounts may not add through due to rounding.

The Trust Board of Hawke's Bay Museums Trust authorised these financial statements for issue on 02 October 2023 and are signed on behalf of the Board by:

George Lyons - Trustee

Nigel How - Trustee

Statement of Financial Performance

FOR THE YEAR ENDED 30 JUNE 2023

	Note	2023 \$	2022 \$
Revenue			
Council grants	1	1,147,921	1,187,234
Other grants and donations received	2	187,242	46,620
Interest revenue		22,476	7,633
Other revenue		-	-
Total Revenue		1,357,639	1,241,487
Expenses			
Audit fees		5,780	5,780
Accounting charge	3	25,100	28,800
Accounting software charges		255	255
Conservation		12,600	5,600
Donation - storage facility		-	-
General expenses		389	223
Insurance		2,385	2,270
Legal costs		1,600	-
Management fees	3	1,112,921	1,148,528
Ministry of Culture and Heritage grant expenditure		-	3,630
Marian Holt Grant Expenditure		4,730	-
Total Expenses		1,165,760	1,195,085
Surplus/(Deficit) for the Year		191,879	46,402

Roundings

Numbers in the financial statements and notes to the accounts may not add through due to rounding.

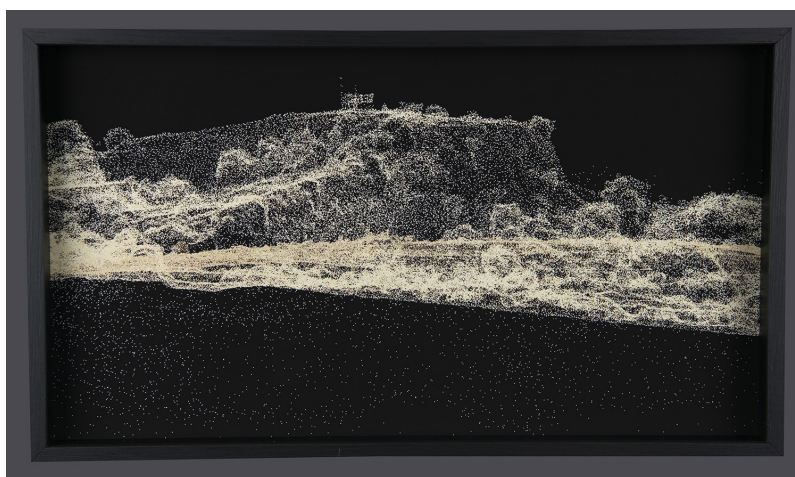


Image: **Ōtātara Pā**, 2022, **Russ Flatt (b.1971)**, purchase, collection of Hawke's Bay Museums Trust, Ruawharo Tā-ū-rangi, 2022/36/2. All rights reserved.

STATEMENT OF MOVEMENTS IN EQUITY

FOR THE YEAR ENDED 30 JUNE 2023

	Note	2023 \$	2022 \$
Opening Balance of Equity at 1 July		30,475,581	28,912,755
Net Surplus/(Deficit) for Year Allocated to:			
Retained earnings		159,966	9,079
Special funds		31,913	37,323
Net Surplus/(Deficit) for Year		191,879	46,402
Movement in asset revaluation reserve		929,919	1,516,425
Closing Balance of Equity at 30 June	11	31,597,380	30,475,581



Image: **Sari dress**, 1970s, **Roswitha Robertson (b.1928, d.2021)**, gifted by Rosalind Harker, collection of Hawke's Bay Museums Trust, Ruawhāro Tā-ū-rangi, 2022/28/1. All Rights Reserved.

Statement of Cash Flows

FOR THE YEAR ENDED 30 JUNE 2023

	Note	2023 \$	2022 \$
Cash Flows From Operating Activities			
Cash was received from:			
Receipts of council grants		1,147,921	1,187,234
Donations- Specified funds		15,000	10,000
Donations- General		9,437	4,690
Interest receipts		15,644	5,966
Other operating revenue		9,081	20,000
Goods and services tax (net inflow)		(1,714)	761
		1,195,369	1,228,651
Cash was applied to:			
Audit fee		(11,390)	-
Management fee & education grant		(1,112,921)	(1,148,528)
Accounting fee		(25,100)	(28,800)
Donations paid		-	-
Marian Holt Grant Expenditure		(4,730)	(3,630)
Conservation expenses		(12,600)	(5,600)
Insurance and legal expenses		(3,985)	(2,270)
Other expenses		(644)	(478)
		(1,171,370)	(1,189,305)
Net Cash Flows from Operating Activities	13	23,999	39,345
Cash Flows from investing activities			
Cash was applied to:			
Payments to acquire collection assets		(31,500)	(2,700)
Net cashflows from Investing Activities		(31,500)	(2,700)
Net Increase/(Decrease) in Cash		(7,500)	36,645
Opening Cash Balance		674,645	638,000
Closing Cash Balance		667,145	674,645

Roundings

Numbers in the financial statements and notes to the accounts may not add through due to rounding.

Notes to the Financial Statements

FOR THE YEAR ENDED 30 JUNE 2023

Statement of Accounting Policies

Reporting Entity

The Hawke's Bay Museums Trust (Incorporated) is registered under the Charitable Trusts Act 1957 and is registered as a charitable entity under the Charities Act 2005.

General Accounting Policies

The general accounting policies recognised as appropriate for the measurement and reporting of results, and financial position, under the historical cost method as modified by the revaluation of certain assets, have been followed in the preparation of these financial statements.

The Board has elected to apply PBE-SFR-A (PS) Public Benefit Entity Simple Format Reporting - Accrual (Public Sector) on the basis that the Trust does not have public accountability (as defined) and has total annual expenses of less than \$2 million.

The financial statements are prepared on the assumption that the Trust will continue to operate in the foreseeable future.

All transactions in the financial statements are reported using the accrual basis of accounting.

Significant Accounting Policies

Bank Accounts and Cash

Bank Accounts and Cash comprise cheque or savings accounts and deposits held on call with banks.

Investments

Investments comprise bank term deposits.

Accounts Receivable

Accounts receivable are stated at their estimated net realisable value.

Grants

Grants received are recognised in the Statement of Financial Performance when the requirements under the grant agreement have been met. Any grants for which the requirements under the grant agreement have not been completed will be carried as liabilities until the conditions have been fulfilled.

Donated Assets

Revenue from donated assets is recognised upon receipt of the asset if the asset has a useful life of more than 12 months and the value of the asset is readily obtainable and significant.

Donate assets for the Faraday Centre Collection are not separately recorded as donations. They are valued at year end.

Artworks and Collection

The Trust has elected to apply Public Sector Accounting

Standard 17 - Property, Plant and Equipment (PBE IPSAS 17). Items contained in collection assets tend to have an indefinite life and are generally not of a depreciable nature. Depreciation is therefore not applicable and collection assets are carried at fair value. Carrying values are reviewed every three years to ensure those values are not materially different to fair value.

Collection assets are measured at fair value and consist of the following classes:

- Library archives
- Textiles and Associated Items
- Taonga Maori
- Fine Arts
- Social History
- Pottery, Porcelain, Glass, Silver
- Ethnology
- Faraday Centre

Revaluations

The net revaluation results are credited or debited to other comprehensive revenue and expense and are accumulated to an asset revaluation reserve in equity for that class of asset. Where this would result in a debit balance in the asset revaluation reserve, this balance is recognised in the surplus or deficit. Any subsequent increase on revaluation that reverses a previous decrease in value recognised in the surplus or deficit will be recognised first in the surplus or deficit up to the amount previously expensed, and then recognised in other comprehensive revenue and expense.

Creditors and Accrued Expenses

Creditors and accrued expenses are measured on the amount owing.

GST

The Trust is registered for GST. The Statement of Financial Performance has been prepared so that all components are stated net of GST. All items in the Statement of Financial Position are stated net of GST, with the exception of receivables and payables, which include GST invoiced.

Interest Revenue

Interest revenue is recorded as it is earned during the year.

Income Tax

Hawkes Bay Museums Trust is exempt from paying income tax.

Changes in Accounting Policies

There have been no changes in accounting policies for the 2022/23 financial year.

Notes to the Financial Statements continue

1. Council Grants

The Hawke's Bay Museums Trust is jointly funded by Napier City Council and Hastings District Council.

	2023	2022
	\$	\$
Hastings District Council- Operating grant	566,460	586,117
Napier City Council- Operating grant	566,460	586,117
Hastings District Council - Education grant	15,000	15,000
Total Council Grants	1,147,920	1,187,234

2. Other Grants and Donations Received

	2023	2022
	\$	\$
Donations - Acquisitions	173,075	13,300
Grants (Ministry of Culture & Heritage)	-	3,630
Donations - General	9,437	4,690
Donations - Specified funds	-	25,000
Grants Marian Holt Grant	4,730	-
Total Other Grants and Donations Received	187,242	46,620



Image: **Madonna, design drawing for stained glass window, 1980s, Phyllis Simmonds (b.1932, d.2020)**, gifted by Louise Walsh, Darryl and Lee Simmonds, collection of Hawke's Bay Museums Trust, Ruawharo Tā-ū-rangi, 2022/21/19. All Rights Reserved.

Notes to the Financial Statements continue

3. Related Parties

Hastings District Council and Napier City Council are related parties, to the extent that they contribute funds and are represented on the Board. The Councils both provide operating grants to the trust as detailed in note 1.

The Hawkes Bay Museums Trust has contracted Napier City Council to provide administrative and accounting services for the Trust's operations. Payment for these services during the financial year was \$25,100 (2022: \$28,800).

The Hawkes Bay Museums Trust has also contracted Napier City Council to provide administrative and management services specifically for the care and management of the collection. Payment for services during the financial year was \$1,112,921 (2022: \$1,148,528) as follows:

	2023	2022
Napier City Council Management Fee - Services Provided:	\$	\$
Buildings and maintenance	55,555	58,788
Offsite storage lease rental	164,004	164,001
Energy costs	84,660	85,180
Collection direct costs	35,466	35,466
Collection insurance	34,884	102,302
Employee costs	511,855	488,536
Overheads	211,497	199,255
	1,097,921	1,133,528
Annual Education Grant	15,000	15,000
Total Management Fee Charged	1,112,921	1,148,528
Administrative expenses	25,100	25,866

4. Bank Accounts and Cash

	2023	2022
	\$	\$
Westpac Bank - Current account	51,885	59,093
Total Bank Accounts and Cash	51,885	59,093

Notes to the Financial Statements continue

5. Investments

	2023	2022
	\$	\$
Westpac Term Deposits - General funds	540,000	540,293
Westpac Term Deposits - Trusts held on behalf:		
M S Spence Trust	33,387	33,387
L D Bestall Trust	20,834	20,834
Estate L D Bestall	21,039	21,039
Total Investments	615,260	615,553

6. Accounts Receivable and Accrued Revenue

	2023	2022
	\$	\$
Accounts Receivable	-	15,000
Interest accrued	9,986	3,154
Total Accounts Receivable and Accrued Revenue	9,986	18,154



Image: Illuminated address, presented to Walter John Yarrall by staff from the Napier Railway Workshops, 1910s, gifted by Margaret Tyrrell, collection of Hawke's Bay Museums Trust, Ruawhāro Tā-ū-rangi, 2022/44. Public Domain

Notes to the Financial Statements continue

7. Artworks and Collections

Carrying values of the collection assets are reviewed at least every five years to ensure those values are not materially different to fair value.

The Faraday Centre Collection was valued by independent registered valuer Craig S Scoullar MPINZ of Asset Valuations Ltd as at 30 June 2023 using fair value. The other Museum Art & Collection Assets were valued by independent registered valuer Jessica Pearlless MPINZ of Paragon Matter Limited as at 30 June 2023 using fair value. The basis for both valuations is 'Estimated Market Value.'

	Library Archives- Owned	Textiles & Associated Items- Owned	Taonga Maori- Owned	Taonga Maori- Custodial	Fine Arts- Owned	Social History- Owned	Pottery Porcelain Glass Silver- Owned	Ethnology- Owned	Subtotal	Faraday Centre- Owned	Total
Carrying amount at 1 July 2021	1,873,262	799,322	10,125,989	2,000,000	10,301,517	992,898	432,769	1,287,348	27,813,105	541,235	28,354,340
Acquisitions	-	-	-	-	-	-	2,700	-	2,700	-	2,700
Donations	5,000	5,700	1,100	-	1,500	-	-	-	13,300	-	13,300
Deaccessions	-	-	-	-	-	-	-	-	-	-	-
Revaluation	-	-	506,299	100,000	824,121	-	21,638	64,367	1,516,425	-	1,516,425
Carrying amount at 30 June 2022	1,878,262	805,022	10,633,388	2,100,000	11,127,138	992,898	457,107	1,351,715	29,345,530	541,235	29,886,765
Carrying amount at 1 July 2022	1,878,262	805,022	10,633,388	2,100,000	11,127,138	992,898	457,107	1,351,715	29,345,530	541,235	29,886,765
Acquisitions	5,725	-	-	-	5,717	175	19,882	-	31,500	-	31,500
Donations	-	2,699	-	6,500	99,033	1,750	58,343	4,750	173,075	-	173,075
Deaccessions	-	-	-	-	-	-	-	-	-	-	-
Revaluation	(1,225)	-	-	-	286,640	420,000	76,815	93,200	875,430	54,489	929,919
Carrying amount at 30 June 2023	1,882,762	807,721	10,633,388	2,106,500	11,518,528	1,414,823	612,147	1,449,665	30,425,535	595,724	31,021,258

Notes to the Financial Statements continue

8. Accounts Payable & Accruals

	2023	2022
	\$	\$
Accounts payable	5,780	12,232
Total Accounts Payable & Accruals	5,780	12,232

9. Unspent Grants

	2023	2022
	\$	\$
Ministry of Culture & Heritage	16,370	16,370
Marian Holt Grant	5,247	897
Total Unspent Grants	21,617	17,267

10. Non-Current Liabilities

	2023	2022
	\$	\$
M S Spence Trust	33,387	33,387
L D Bestall Trust	20,834	20,834
Estate L D Bestall	21,039	21,039
Total Non-Current Liabilities	75,260	75,260



Image: **Mahuru**, 2023, **Maioha Kara**, gifted by the MTG Foundation, collection of Hawke's Bay Museums Trust, Ruawhāro Tā-ū-rangi, 2023/13. All rights reserved.

Notes to the Financial Statements continue

11. Movements in Equity

	Year Ended 30 June 2023 \$	Year Ended 30 June 2022 \$
Special Reserves		
Restricted Reserves		
Opening balance 1 July 2022	16,044	15,682
Grants, bequests and donations revenue	305	151
Interest revenue	582	211
Closing Balance Special Reserves	16,931	16,044
Unrestricted Reserves		
Opening balance 1 July 2022	85,625	59,259
Grants, bequests and donations revenue	1,615	25,570
Interest revenue	3,085	796
Conservation purchases	(1,006)	-
Closing Balance Unrestricted Reserves	89,319	85,625
Acquisitions Reserve		
Opening balance 1 July 2022	406,605	400,116
Grants, bequests and donations revenue	7,413	3,836
Interest revenue	14,166	5,353
Acquisitions purchases	(31,500)	(2,700)
Closing Balance Acquisitions Reserve	396,684	406,605
Conservation Reserve Fund		
Opening balance 1 July 2022	11,292	16,573
Grants, bequests and donations revenue	104	133
Interest revenue	199	186
Conservation purchases	(11,594)	(5,600)
Closing Balance Conservation Reserve	1	11,292
Trusts Held on Behalf		
Opening balance 1 July 2022	13,525	12,437
Interest revenue	4,444	1,088
Closing Balance Trusts Held on Behalf	17,969	13,525
Total Special Reserves	520,903	533,091

Notes to the Financial Statements continue

11. Movements in Equity continued

	Year Ended 30 June 2023 \$	Year Ended 30 June 2022 \$
Asset Revaluation Reserve		
Opening balance 1 July 2022	28,161,859	26,645,433
Deaccessions	-	-
Movement in asset revaluation reserve	929,919	1,516,425
Closing Balance Revaluation Reserve	29,091,778	28,161,858
Retained Earnings		
Opening balance 1 July 2022	1,780,634	1,763,255
Net surplus/(deficit) for year	159,966	9,079
Transfer of donation from unrestricted reserve	1,006	-
Transfer of capital expenditure from acquisitions reserve	31,500	2,700
Transfer of capital expenditure from conservation reserve	11,594	5,600
Closing Balance Retained Earnings	1,984,700	1,780,634
Total Equity	31,597,381	30,475,582

Restricted Reserves - Consist of reserves which have conditions of use attached to the funds held within the reserve.

Unrestricted Reserves - Funds held in equity which have no restrictions on conditions of use .

Acquisitions Reserve - Funds which the Trustees have identified and set aside for the specific purpose of acquisition of items for the Museum collection.

Conservation Reserve Fund - Funds which the Trustees have identified and set aside for applying to the cost of conservation of collection items.

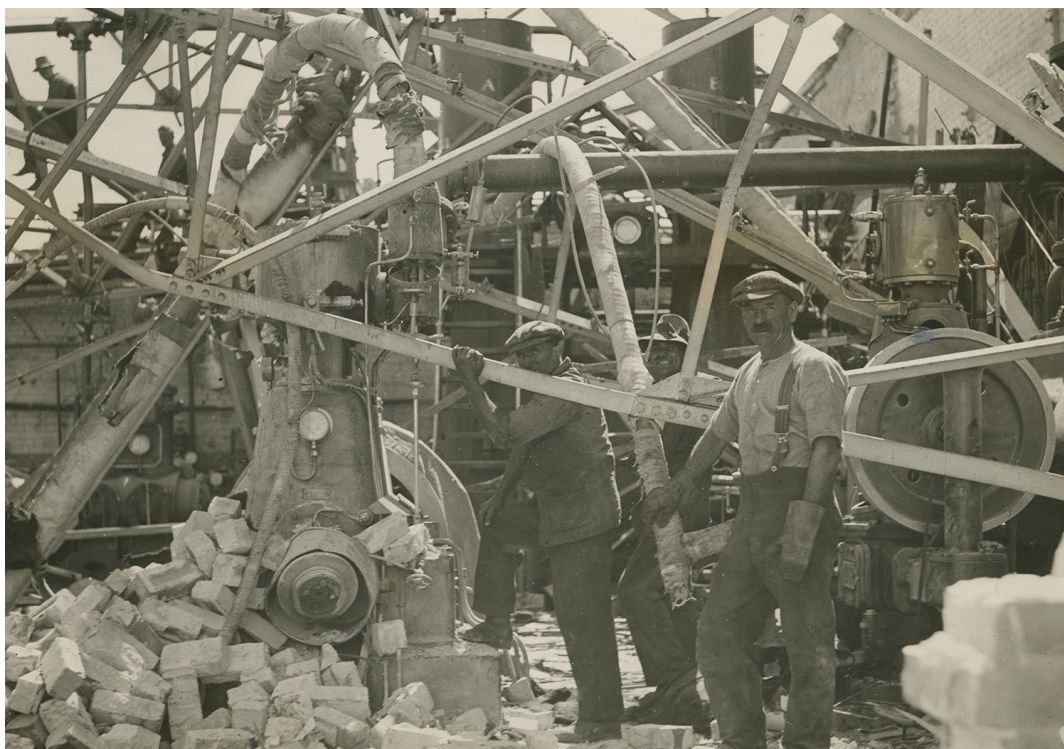


Image: **Damaged machinery at Clive Freezing Works, 1930s**, purchase, collection of Hawke's Bay Museums Trust, Ruawharo Tā-ū-rangi, 2023/2/19. Public Domain.

Notes to the Financial Statements continue

12. Special Funds

	Opening Balance as at 1 July 2022	Transfers	Grants & Bequests Received	General Donations Received	Expenditure From Special Funds for 12 Months to 30 Jun 2023	De-accessions for 12 Months to 30 Jun 2023	Allocation of Proportion Interest Income	Closing Balance as at 30 Jun 2023
Restricted Reserves								
QEII Award Fund	16,044	-	-	305	-	-	582	16,931
	16,044	-	-	305	-	-	582	16,931
Unrestricted Reserves								
Liliput Building Fund	60,624	-	-	1,150	-	-	2,197	63,970
Webb Foundation Building Fund	25,000	-	-	465	(1,006)	-	888	25,347
	85,624	-	-	1,615	(1,006)	-	3,085	89,317
Acquisitions Reserve Fund								
Millin Estate	308,314	-	-	5,847	-	-	11,174	325,335
LJ Sanderson	91,184	-	-	1,500	(24,240)	-	2,866	71,310
M L Holt	-	-	-	-	-	-	-	-
Webb Trust (Acquisitions)	7,107	-	-	66	(7,259)	-	126	40
	406,606	-	-	7,413	(31,500)	-	14,166	396,685
Conservation Reserve Fund								
B Horne	-	-	-	-	-	-	-	-
M L Holt	8,064	-	-	74	(8,280)	-	142	-
R & D Crowther	530	-	-	5	(544)	-	9	-
Estate Keith Stichbury	1,061	-	-	10	(1,090)	-	19	-
Other - FHBMAG Care Fund	359	-	-	3	(368)	-	6	-
Webb Trust (Conservation)	1,278	-	-	12	(1,313)	-	23	-
	11,292	-	-	104	(11,594)	-	199	-
Total HBMT Special Funds	519,565	-	-	9,437	(44,100)	-	18,032	502,933
Trusts Held on Behalf								
M S Spence Trust	6,002	-	-	-	-	-	1,972	7,974
L D Bestall Trust	3,716	-	-	-	-	-	1,230	4,946
Estate L D Bestall	3,807	-	-	-	-	-	1,242	5,049
	13,525	-	-	-	-	-	4,444	17,969
Total Special Funds	533,090	-	-	9,437	(44,100)	-	22,475	520,902

Notes to the Financial Statements continue

13. Reconciliation of 'Net Surplus' to 'Net Cashflow from Operating Activities'

	2023	2022
	\$	\$
Operating Surplus/(Deficit)	191,879	46,402
Donated assets	(173,075)	(13,300)
Cash Surplus/(Deficit) from Operations	18,805	33,102
Plus Movements in Working Capital Items:		
Prepayments, accounts receivable & accrued revenue	8,168	(16,667)
Accounts payable and accruals	(6,452)	6,622
Increase in unspent grants	4,350	16,370
Net GST movement	(872)	(81)
Net cash inflow/(outflow) from operating activities	23,999	39,345

Roundings

Numbers in the financial statements and notes to the accounts may not add through due to rounding.

14. Commitments

	2023	2022
	\$	\$
Commitments	-	-

15. Contingencies

	2023	2022
	\$	\$
Contingent liabilities	-	-

16. Post Balance Date Events

There were no significant events after balance date (2022 nil).



Image: **Billy Apple* (T147), 2008**, Billy Apple (b.1935, d.2021), gifted by the MTG Foundation, collection of Hawke's Bay Museums Trust, Ruawhāro Tā-ū-rangi, 2022/17. All rights reserved.

Notes to the Financial Statements continue

17. Statement of Intent

In its 2022/23 Statement of Intent the Trust set financial targets for the year. The following table summarises actual results against those targets, with explanations for variances.

	2022/23 Actual	2022/23 Target	Variance
Revenue			
Council Funding (NCC & HDC)	1,147,921	1,147,921	-
Interest income	22,476	15,000	7,476
Cash donations & bequests	9,437	4,500	4,937
Collection donations	173,075	-	173,075
Grant funding - Marian Holt Grant	4,730	-	4,730
Total Revenue	1,357,640	1,167,421	190,218
Expenses			
Management fee	933,920	933,917	(3)
Off-site storage	164,001	164,004	3
Education grant	15,000	15,000	-
Trust admin & management	25,100	25,100	(0)
Grant funding expenditure - Marian Holt Grant	4,730	-	(4,730)
Audit	5,780	5,610	(170)
Insurance	2,385	2,270	(115)
Legal fees	1,600	1,600	-
Accounting software	255	255	-
General expenditure	389	165	(224)
Conservation	12,600	9,750	(2,850)
Accessions	31,500	9,750	(21,750)
Total Expenses	1,197,260	1,167,421	(29,839)
Surplus/(Deficit)	160,380	-	160,379

	2022/23 Actual	2022/23 Target	Variance
Ratio of Shareholders Funds to Total Assets	99.7%	95.0%	4.7%

Note: This ratio shows the proportion of assets on which the shareholders have a residual claim.

Roundings

Numbers in the financial statements and notes to the accounts may not add through due to rounding.

Statement of Intent

Hawke's Bay Museums Trust

Policies and Objectives Regarding Ownership and Control

The Hawke's Bay Museum Trust is a Council Controlled Organisation as defined by Section 6 of the Local Government Act 2002. The objectives of the Trust are:

- To hold and protect the regional collection for the people of Hawke's Bay
- To encourage the development of quality cultural facilities capable of accessing or drawing upon the collection within Hawke's Bay
- To advance and promote cultural heritage and arts through the use of the collection
- To oversee collection management through the development of collection policy, conservation and risk management strategies via a contract for services with the Napier City Council
- To oversee collection development through the regulation of the acquisition and disposal of collection items
- To manage the bequests vested in the Trust in a way which maximises benefit to the collection
- There has been no change between the intended and actual nature and scope of activities delivered.

Performance Targets

The key performance targets and performance results (as reflected in the Trust's Annual Report for 2022/23) are:

Key Result Area	Performance Indicator	Target/Reporting Method	
		2022/23 Target	2022/23 actual
Protection	Full insurance cover is provided for the collection.	Yes	Yes
	Collections are stored in an acceptable environment	No items reported to have suffered deterioration due to the environment	One item damaged due to water ingress - chair [2012/11/3]
Quality	Every item accessioned into the collection has undergone a detailed selection process within the framework of the Collection Strategy	Yes	Yes
	De-accessions are managed in accordance with the Collection Strategy and reported to the Board	Yes	Yes
Access	HBMT collections are used for academic and personal research	1,500 enquiries	50,667 visitors to online catalogue 471 enquiries
	Collections are made available to the public through quality exhibitions	2-5 collection-based exhibitions	Two: Silver Shadows: The Story of Marineland Finding Refuge in Fashion: Minh Ta
Development	Bequests fund income is used in the manner determined by the donor	Yes	Yes
	Conservation funds income is used solely for collection care.	Yes	Yes

The Trust recognises and appreciates the ongoing Collection acquisition support that it receives from the Hawke's Bay Museums Foundation and many private benefactors.



Image: **Silk dress**, 1960s, **Babs Radön**, gifted by Beverley Werry, collection of Hawke's Bay Museums Trust, Ruawharo Tā-ū-rangi, 2022/23/1. All rights reserved.



Image: **Heretaunga Māori Choir**, 1938, **Sidney Riley Studios (active 1911-1946)**, gifted by Tricia Glensor, collection of Hawke's Bay Museums Trust, Ruawharo Tā-ū-rangi, 2022/37/2. Public Domain

Independent Auditor's Report

AUDIT NEW ZEALAND
Mana Arotake Aotearoa

Independent Auditor's Report

To the readers of Hawke's Bay Museums Trust's financial statements and performance information for the year ended 30 June 2023

The Auditor-General is the auditor of Hawke's Bay Museums Trust (the Trust). The Auditor-General has appointed me, Karen Young, using the staff and resources of Audit New Zealand, to carry out the audit of the financial statements and performance information of the Trust on his behalf.

Opinion

We have audited:

- the financial statements of the Trust on pages 7 to 21, that comprise the statement of financial position as at 30 June 2023, the statement of financial performance, statement of movements in equity and statement of cash flows for the year ended on that date and the notes to the financial statements that include accounting policies and other explanatory information; and
- the performance information of the Trust on page 22.

In our opinion:

- the financial statements of the Trust on pages 7 to 21:
 - present fairly, in all material respects:
 - its financial position as at 30 June 2023; and
 - its financial performance and cash flows for the year then ended; and
 - comply with generally accepted accounting practice in New Zealand in accordance with the Public Benefit Entity Simple Format Reporting – Accrual (Public Sector) Standard; and
- the performance information of the Trust on page 22 presents fairly, in all material respects, the Trust's actual performance compared against the performance targets and other measures by which performance was judged in relation to the Trust's objectives for the year ended 30 June 2023.

Our audit was completed on 2 October 2023. This is the date at which our opinion is expressed.

The basis for our opinion is explained below. In addition, we outline the responsibilities of the Trust Board and our responsibilities relating to the financial statements and the performance information, we comment on other information, and we explain our independence.

Basis for our opinion

We carried out our audit in accordance with the Auditor-General's Auditing Standards, which incorporate the Professional and Ethical Standards and the International Standards on Auditing (New Zealand) issued by the New Zealand Auditing and Assurance Standards Board. Our responsibilities under those standards are further described in the Responsibilities of the auditor section of our report.

We have fulfilled our responsibilities in accordance with the Auditor-General's Auditing Standards.

We believe that the audit evidence we have obtained is sufficient and appropriate to provide a basis for our opinion.

Responsibilities of the Trust Board for the financial statements and the performance information

The Trust Board is responsible on behalf of the Trust for preparing financial statements that are fairly presented and that comply with generally accepted accounting practice in New Zealand. The Trust Board is also responsible for preparing the performance information for the Trust.

The Trust Board is responsible for such internal control as it determines is necessary to enable it to prepare financial statements and performance information that are free from material misstatement, whether due to fraud or error.

In preparing the financial statements and the performance information, the Trust Board is responsible on behalf of the Trust for assessing the Trust's ability to continue as a going concern. The Trust Board is also responsible for disclosing, as applicable, matters related to going concern and using the going concern basis of accounting, unless the Trust Board intends to liquidate the Trust or to cease operations, or has no realistic alternative but to do so.

The Trust Board's responsibilities arise from the Local Government Act 2002.

Responsibilities of the auditor for the audit of the financial statements and the performance information

Our objectives are to obtain reasonable assurance about whether the financial statements and the performance information, as a whole are free from material misstatement, whether due to fraud or error, and to issue an auditor's report that includes our opinion.

Reasonable assurance is a high level of assurance, but is not a guarantee that an audit carried out in accordance with the Auditor-General's Auditing Standards will always detect a material

misstatement when it exists. Misstatements are differences or omissions of amounts or disclosures, and can arise from fraud or error. Misstatements are considered material if, individually or in the aggregate, they could reasonably be expected to influence the decisions of readers, taken on the basis of these financial statements and the performance information.

For the budget information reported in the financial statements and the performance information, our procedures were limited to checking that the information agreed to the Trust's statement of intent.

We did not evaluate the security and controls over the electronic publication of the financial statements and the performance information.

As part of an audit in accordance with the Auditor-General's Auditing Standards, we exercise professional judgement and maintain professional scepticism throughout the audit. Also:

- We identify and assess the risks of material misstatement of the financial statements and the performance information, whether due to fraud or error, design and perform audit procedures responsive to those risks, and obtain audit evidence that is sufficient and appropriate to provide a basis for our opinion. The risk of not detecting a material misstatement resulting from fraud is higher than for one resulting from error, as fraud may involve collusion, forgery, intentional omissions, misrepresentations, or the override of internal control.
- We obtain an understanding of internal control relevant to the audit in order to design audit procedures that are appropriate in the circumstances, but not for the purpose of expressing an opinion on the effectiveness of the Trust's internal control.
- We evaluate the appropriateness of accounting policies used and the reasonableness of accounting estimates and related disclosures made by the Trust Board.
- We evaluate the appropriateness of the reported performance information within the Trust's framework for reporting its performance.
- We conclude on the appropriateness of the use of the going concern basis of accounting by the Trust Board and, based on the audit evidence obtained, whether a material uncertainty exists related to events or conditions that may cast significant doubt on the Trust's ability to continue as a going concern. If we conclude that a material uncertainty exists, we are required to draw attention in our auditor's report to the related disclosures in the financial statements and the performance information or, if such disclosures are inadequate, to modify our opinion. Our conclusions are based on the audit evidence obtained up to the date of our auditor's report. However, future events or conditions may cause the Trust to cease to continue as a going concern.
- We evaluate the overall presentation, structure and content of the financial statements and the performance information, including the disclosures, and whether the financial statements and the performance information represent the underlying transactions and events in a manner that achieves fair presentation.

We communicate with the Trust Board regarding, among other matters, the planned scope and timing of the audit and significant audit findings, including any significant deficiencies in internal control that we identify during our audit.

Our responsibilities arise from the Public Audit Act 2001.

Other Information

The Trust Board is responsible for the other information. The other information comprises the information included on pages 3 to 37, but does not include the financial statements and the performance information, and our auditor's report thereon.

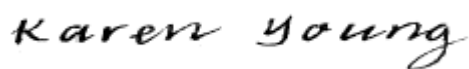
Our opinion on the financial statements and the performance information does not cover the other information and we do not express any form of audit opinion or assurance conclusion thereon.

In connection with our audit of the financial statements and the performance information, our responsibility is to read the other information. In doing so, we consider whether the other information is materially inconsistent with the financial statements and the performance information, or our knowledge obtained in the audit, or otherwise appears to be materially misstated. If, based on our work, we conclude that there is a material misstatement of this other information, we are required to report that fact. We have nothing to report in this regard.

Independence

We are independent of the Trust in accordance with the independence requirements of the Auditor-General's Auditing Standards, which incorporate the independence requirements of Professional and Ethical Standard 1: International Code of Ethics for Assurance Practitioners issued by the New Zealand Auditing and Assurance Standards Board.

Other than the audit, we have no relationship with, or interests in, the Trust.



Karen Young
Audit New Zealand
On behalf of the Auditor-General
Wellington, New Zealand

Appendix I List of Acquisitions

Items acquired 2022/23

System ID	Accession No	Name/Title	Primary Maker (name only)	Primary Prod Date	Credit Line
4762	2020/21	Pou Whakairo / Carved figure			gifted from the estate of Douglas Carmichael Georgetti
99980	2022/5/1	Men's shirt	David Jones Ltd		gifted by Napier City Council
99982	2022/5/2	Men's tie	The Parisian Neckwear Co. Ltd.		gifted by Napier City Council
99983	2022/5/3	Men's shirt			gifted by Napier City Council
99984	2022/5/4	Detachable collar			gifted by Napier City Council
99985	2022/5/5	Collar studs			gifted by Napier City Council
99986	2022/5/6	Bow tie			gifted by Napier City Council
99971	2022/17	Billy Apple® (T147), 2008	Billy Apple	2008	gifted by the MTG Foundation
99981	2022/18	Plan, Napier Breakwater	Alfred Jarman; Napier Harbour Board	1895	gifted by Wellington Museum
99987	2022/19	Dress and shawl	Vinka Lucas; Vinka Design Limited		gifted by Marie Meech
99988	2022/20	Room heater	Christian Barman; His Master's Voice		gifted by Debbie Mein
99989	2022/21/1	Kotuku, design drawing for stained glass window	Phyllis Simmonds		gifted by Louise Walsh, Darryl and Lee Simmonds
99990	2022/21/2	Hen, design drawing for stained glass window	Phyllis Simmonds		gifted by Louise Walsh, Darryl and Lee Simmonds
99991	2022/21/3	Kingfishers, design drawing for stained glass window	Phyllis Simmonds		gifted by Louise Walsh, Darryl and Lee Simmonds
99992	2022/21/4	Design drawing for stained glass window	Phyllis Simmonds		gifted by Louise Walsh, Darryl and Lee Simmonds
99993	2022/21/5	Porpoise, design drawing for stained glass window	Phyllis Simmonds		gifted by Louise Walsh, Darryl and Lee Simmonds
99994	2022/21/6	From Flying Fish, design drawing for stained glass window	Phyllis Simmonds		gifted by Louise Walsh, Darryl and Lee Simmonds
99995	2022/21/7	Design drawing for stained glass window, Dalton House commission	Phyllis Simmonds	1989	gifted by Louise Walsh, Darryl and Lee Simmonds
99996	2022/21/8	Design drawing for stained glass window, Dalton House commission, Pool	Phyllis Simmonds	1989	gifted by Louise Walsh, Darryl and Lee Simmonds
99997	2022/21/9	Design drawing for stained glass window, Dalton House commission	Phyllis Simmonds	1989	gifted by Louise Walsh, Darryl and Lee Simmonds
99998	2022/21/10	Design drawing for stained glass window, Dalton House commission	Phyllis Simmonds	1989	gifted by Louise Walsh, Darryl and Lee Simmonds
99999	2022/21/11	Phyllis Simmonds at work on Dalton House stained glass window commission	Phyllis Simmonds; Phyllis Simmonds; Francis Goold Spackman; Mark Nicol	1989	gifted by Louise Walsh, Darryl and Lee Simmonds

System ID	Accession No	Name/Title	Primary Maker (name only)	Primary Prod Date	Credit Line
100000	2022/21/12	Phyllis Simmonds at work on Dalton House stained glass window commission	Francis Goold Spackman; Phyllis Simmonds	1989	gifted by Louise Walsh, Darryl and Lee Simmonds
100001	2022/21/13	Quote for stained glass artwork for St Patricks Church, Napier, Phyllis Simmonds	Phyllis Simmonds	1989	gifted by Louise Walsh, Darryl and Lee Simmonds
100002	2022/21/14	Drawing for Proposed Glass Window - St Patricks Church Napier	Phyllis Simmonds		gifted by Louise Walsh, Darryl and Lee Simmonds
100003	2022/21/15	Rainbow - Birds - Hills and Sea, design drawing for proposed stained glass window	Phyllis Simmonds		gifted by Louise Walsh, Darryl and Lee Simmonds
100004	2022/21/16	Water, Birds and Rainbow, design drawing for proposed stained glass window	Phyllis Simmonds		gifted by Louise Walsh, Darryl and Lee Simmonds
100005	2022/21/17	Sky - Birds - Rainbow, design drawing for proposed stained glass window	Phyllis Simmonds		gifted by Louise Walsh, Darryl and Lee Simmonds
100006	2022/21/18	Abstract Window for Modern Building, design drawing for stained glass window	Phyllis Simmonds		gifted by Louise Walsh, Darryl Simmonds and Lee Simmonds
100007	2022/21/19	Madonna, design drawing for stained glass window	Phyllis Simmonds		gifted by Louise Walsh, Darryl and Lee Simmonds
100008	2022/21/20	Ascent, design drawing for stained glass window	Phyllis Simmonds		gifted by Louise Walsh, Darryl and Lee Simmonds
100009	2022/21/21	Tree of Life, design drawing for stained glass window	Phyllis Simmonds		gifted by Louise Walsh, Darryl and Lee Simmonds
100010	2022/21/22	Peace, design drawing for stained glass window	Phyllis Simmonds		gifted by Louise Walsh, Darryl and Lee Simmonds
99979	2022/22	Allan White and Billy Apple	Mary Apple	2003	gifted by Mary Apple
100046	2022/23/1	Silk dress	Babs Radôn		gifted by Beverley Werry
100047	2022/23/2	Towel	Frank Carpay		gifted by Beverley Werry
100044	2022/24	Vase, Langeudoc	René Lalique		gifted by the MTG Foundation
100011	2022/25/1	Vase, Acacia	René Lalique		purchase
100012	2022/25/2	Vase, Moissac	René Lalique		purchase
100014	2022/25/3	Vase, Espalion	René Lalique		purchase
100015	2022/25/4	Vase, Gui Mistletoe	René Lalique		purchase
100013	2022/25/5	Vase, Camaret	René Lalique		purchase
100056	2022/26	Soup spoon	Phillip Ashbury and Sons	1932-1933	gifted by Michael Wenley
100055	2022/27	Pania of the Reef			gifted by Barbara Spencer in memory of the late Roy Lawrence
100057	2022/28/1	Sari dress	Roswitha Robertson		gifted by Rosalind Harker
100058	2022/28/2	Floral dress	Minh Ta		gifted by Rosalind Harker
100063	2022/29	Dress and coathanger	Babs Radôn	1972	gifted by Barbara Herrick
100082	2022/30/1	Roachs' Limited Hastings 1931			gifted by Jenny Eynon

System ID	Accession No	Name/Title	Primary Maker (name only)	Primary Prod Date	Credit Line
100084	2022/30/2	Looking at Grand Hotel [Hastings] from railway line			gifted by Jenny Eynon
100085	2022/30/3	Opposite Railway Station			gifted by Jenny Eynon
100086	2022/30/4	In Emerson St, below Blythes, Napier	H J Andrews		gifted by Jenny Eynon
100087	2022/30/5	Earthquake damaged street with car			gifted by Jenny Eynon
100088	2022/30/6	One and a half mile slip at Bluff Hill Napier			gifted by Jenny Eynon
100089	2022/30/7	Hospital wall Napier	H J Andrews		gifted by Jenny Eynon
100090	2022/30/8	Scene in Dickens Street, Napier	H J Andrews		gifted by Jenny Eynon
100091	2022/30/9	Hospital Ward Napier	H J Andrews		gifted by Jenny Eynon
100092	2022/30/10	Ira Bridger and Tait on broken wharf at Iron Pot, Port Ahuriri	H J Andrews		gifted by Jenny Eynon
100093	2022/30/11	Boilers under collapsed chimney at Dalton St waterworks	H J Andrews		gifted by Jenny Eynon
100094	2022/30/12	Dr Moore's Hospital on Marine Parade near old fire station, Napier	H J Andrews		gifted by Jenny Eynon
100095	2022/30/13	Earthquake damage			gifted by Jenny Eynon
100096	2022/30/14	Earthquake damage			gifted by Jenny Eynon
100097	2022/30/15	Earthquake damage			gifted by Jenny Eynon
100098	2022/30/16	Earthquake damage			gifted by Jenny Eynon
100099	2022/30/17	Earthquake damaged car			gifted by Jenny Eynon
100100	2022/30/18	Grand Hotel [Hastings] from opposite side of street			gifted by Jenny Eynon
100101	2022/30/19	Blockey's road			gifted by Jenny Eynon
100102	2022/30/20	Ah Wing's place			gifted by Jenny Eynon
100103	2022/30/21	Methodist Church			gifted by Jenny Eynon
100104	2022/30/22	West School			gifted by Jenny Eynon
100105	2022/30/23	Fireman amongst earthquake rubble	Norman Every		gifted by Jenny Eynon
100106	2022/31	Marine Parade and band rotunda			gifted by Judith Gardiner
100064	2022/32/1	Glass bowl	George Davidson & Co		gifted by Marcia Wilkinson, 2022
100065	2022/32/2	Glass bowl	George Davidson & Co		gifted by Marcia Wilkinson, 2022
100066	2022/32/3	Glass cornucopia			gifted by Marcia Wilkinson, 2022
100067	2022/32/4	Vase			gifted by Marcia Wilkinson, 2022
100068	2022/32/5	Glass vase			gifted by Marcia Wilkinson, 2022
100069	2022/32/6	Bowl			gifted by Marcia Wilkinson, 2022
100070	2022/32/7	Uranium glass basket			gifted by Marcia Wilkinson, 2022
100071	2022/32/8	Glass light shade			gifted by Marcia Wilkinson, 2022

System ID	Accession No	Name/Title	Primary Maker (name only)	Primary Prod Date	Credit Line
100072	2022/32/9	Glass vase with brass cap			gifted by Marcia Wilkinson, 2022
100073	2022/32/10	Glass bowl			gifted by Marcia Wilkinson, 2022
100074	2022/32/11	Cornucopia shell vase			gifted by Marcia Wilkinson, 2022
100075	2022/32/12	Glass vase			gifted by Marcia Wilkinson, 2022
100076	2022/32/13	Glass vase			gifted by Marcia Wilkinson, 2022
100077	2022/32/14	Candlestick			gifted by Marcia Wilkinson, 2022
100078	2022/32/15	Piano insulators			gifted by Marcia Wilkinson, 2022
100079	2022/32/16	Glass vase			gifted by Marcia Wilkinson, 2022
100059	2022/33/1	Wairoa Freezing Works	Ans Westra		gifted by Napier City Council
100060	2022/33/2	Wairoa Freezing Works	Ans Westra		gifted by Napier City Council
100061	2022/33/3	Wairoa Freezing Works	Ans Westra		gifted by Napier City Council
100113	2022/34	Gravity MRR (Red)	Neil Frazer	1999	Gifted by Neil Frazer. Courtesy of Milford Galleries Dunedin; Reproduced by Kind Permission of Neil Frazer and Milford Galleries Dunedin
100107	2022/35	Napier Port	Port of Napier Ltd		gifted by Tararua District Council
100080	2022/36/1	Ōmārunui	Russ Flatt	2022	purchase
100081	2022/36/2	Ōtātara Pā	Russ Flatt	2022	purchase
100108	2022/37/1	Piupiu			gifted by Tricia Glensor
100109	2022/37/2	Heretaunga Māori Choir, 1938	Sidney Riley Studios		gifted by Tricia Glensor
100110	2022/37/3	Bessie McHutchon with the Heretaunga Māori Choir	Moore & Thompson		gifted by Tricia Glensor
100111	2022/37/4	Letter from Frederick Bennett, Bishop of Aotearoa to Miss McCutcheon	Bishop Frederick Bennett	06 Apr 1934	gifted by Tricia Glensor
100140	2022/38/1	Pot Plants	Don Ramage	1949	gifted by Jillian Ramage
100141	2022/38/2	Decorative pattern with three figures	Don Ramage	1947	gifted by Jillian Ramage
100142	2022/38/3	Memory	Don Ramage	1946	gifted by Jillian Ramage
100143	2022/38/4	Red Fungus	Don Ramage	1956	gifted by Jillian Ramage
100144	2022/38/5	Burnt Stumps	Don Ramage	1948	gifted by Jillian Ramage
100146	2022/38/6	Burnt Stumps	Don Ramage		gifted by Jillian Ramage
100147	2022/38/7	Eroded tree	Don Ramage		gifted by Jillian Ramage
100148	2022/38/8	Eroded stump	Don Ramage		gifted by Jillian Ramage
100149	2022/38/9	Forest Graveyard	Don Ramage	1961	gifted by Jillian Ramage
100150	2022/38/10	Cranes, Aotea Quay	Don Ramage	1960	gifted by Jillian Ramage
100151	2022/38/11	Rock Forms	Don Ramage	1960	gifted by Jillian Ramage
100152	2022/38/12	Composition in red and blue	Don Ramage	1960	gifted by Jillian Ramage
100153	2022/38/13	Conversation	Don Ramage	1960	gifted by Jillian Ramage

System ID	Accession No	Name/Title	Primary Maker (name only)	Primary Prod Date	Credit Line
100154	2022/38/14	Firewood	Don Ramage	1963	gifted by Jillian Ramage
100145	2022/38/15	Wet Night	Don Ramage	1961	gifted by Jillian Ramage
100156	2022/38/16	The Light Machine	Don Ramage	1966	gifted by Jillian Ramage
100157	2022/38/17	The Big Two	Don Ramage	1963	gifted by Jillian Ramage
100158	2022/38/18	New Horizons	Don Ramage	1966	gifted by Jillian Ramage
100159	2022/38/19	Forms by a lake	Don Ramage	1963	gifted by Jillian Ramage
100160	2022/38/20	Movement in Red	Don Ramage	1964	gifted by Jillian Ramage
100161	2022/38/21	Starform on Brown	Don Ramage	1969	gifted by Jillian Ramage
100162	2022/38/22	Window card, New Zealand Ballet	Don Ramage; The Royal New Zealand Ballet	1965	gifted by Jillian Ramage
100163	2022/38/23	Poster, The New Zealand Ballet Fire Disaster Fund	Don Ramage; The Royal New Zealand Ballet	1967	gifted by Jillian Ramage
100164	2022/38/24	Poster, Cinderella	Don Ramage; The Royal New Zealand Ballet	1969	gifted by Jillian Ramage
100165	2022/38/25	Poster, Romeo and Juliet	Don Ramage; The New Zealand Theatre Company		gifted by Jillian Ramage
100166	2022/38/26	Poster, Petrouchka	Don Ramage; The Royal New Zealand Ballet	1964	gifted by Jillian Ramage
100167	2022/38/27	Poster, Ballet	Don Ramage; The Royal New Zealand Ballet	1970	gifted by Jillian Ramage
100168	2022/38/28	Poster, Casse Noisette	Don Ramage; The Royal New Zealand Ballet	1963	gifted by Jillian Ramage
100169	2022/38/29	Window card, The Devils	Don Ramage; Victoria University Drama Club	1965	gifted by Jillian Ramage
100170	2022/38/30	Steel Jungle	Don Ramage	1972	gifted by Jillian Ramage
100171	2022/38/31	Facade No 2	Don Ramage	1975	gifted by Jillian Ramage
100172	2022/38/32	The last flight No 2	Don Ramage	1973	gifted by Jillian Ramage
100173	2022/38/33	The Last Flight No 6	Don Ramage	1976	gifted by Jillian Ramage
100174	2022/38/34	Tubular No 1	Don Ramage	1969	gifted by Jillian Ramage
100175	2022/38/35	Tubular No 2	Don Ramage	1969	gifted by Jillian Ramage
100176	2022/38/36	Tubular No 6	Don Ramage	1971	gifted by Jillian Ramage
100177	2022/38/37	Tubular construction	Don Ramage	1971	gifted by Jillian Ramage
100178	2022/38/38	Tubular No 3	Don Ramage	1971	gifted by Jillian Ramage
100179	2022/38/39	Tubular Assembly	Don Ramage	1969	gifted by Jillian Ramage
100180	2022/38/40	Tubular No 4	Don Ramage	1971	gifted by Jillian Ramage
6449	2022/39/1	Untitled portrait of a Māori woman	Jane Elgin Page		gifted by Dr. David Campbell
6174	2022/39/2	Untitled portrait of a Māori woman	Jane Elgin Page		gifted by Dr. David Campbell
6662	2022/39/3	Untitled portrait of a Māori man	Jane Elgin Page		gifted by Dr. David Campbell
100134	2022/40	Wooden shamrock			gifted by Mary Minto
100119	2022/41	Horse and cart outside F L Bone	Wallace Poll	1914-1918	gifted by anonymous donor
100122	2022/42	Milk bottle	Napier Dairy Co.; Thatcher Glass Manufacturing Company	1923-1954	gifted by Perry Spiller

System ID	Accession No	Name/Title	Primary Maker (name only)	Primary Prod Date	Credit Line
100269	2022/43/1	Dr Moore's Hospital, Napier, after the 1931 Hawke's Bay earthquake		Post 03 Feb 1931	gifted by Justine Smith
100270	2022/43/2	Bank of New Zealand, Napier, after the 1931 Hawke's Bay earthquake		Post 03 Feb 1931	gifted by Justine Smith
100271	2022/43/3	Ruins of the Masonic Hotel, Napier, after the 1931 Hawke's Bay earthquake		Post 03 Feb 1931	gifted by Justine Smith
100272	2022/43/4	The Old People's Home, Park Island, after the 1931 Hawke's Bay earthquake		Post 03 Feb 1931	gifted by Justine Smith
100273	2022/43/5	Fire in Hastings Street, Napier, after the 1931 Hawke's Bay earthquake		Post 03 Feb 1931	gifted by Justine Smith
100155	2022/44	Illuminated address, presented to Walter John Yarrall by staff from the Napier Railway Workshops		12 Dec 1913	gifted by Margaret Tyrrell.
100224	2022/45/1	Programme, Maraetotara - Waimarama Country Women's Institute	Maraetotara/ Wāimarama Women's Institute	1985-1986	gifted by David Belcher
100225	2022/45/2	Programme, Maraetotara - Waimarama Country Women's Institute	Maraetotara/ Wāimarama Women's Institute	1986-1987	gifted by David Belcher
100226	2022/45/3	Programme, Maraetotara - Waimarama Country Women's Institute, 60th Diamond Jubilee	Maraetotara/ Wāimarama Women's Institute	1987-1988	gifted by David Belcher
100139	2022/46	J D Ormond letter register	John Davies Ormond	Circa 1869	
100182	2022/47/1	Noel - fishing. Age 3. Daddy, Grandma Strack.		1928-1929	gifted by Claire Osborne
100185	2022/47/2	Noel with his little boat his Daddy made for him. Our cottage at Westshore in the background. Age 2.		1928-1929	gifted by Claire Osborne
100223	2023/1	Toki			gifted by David Lemmon, Roger Lemmon and Margaret Norrie
100192	2023/2/1	Refugees from Tangoio Pā walking to Napier on Westshore Embankment Road		Post 03 Feb 1931	purchase.
100193	2023/2/2	Aerial view of earthquake damage to Napier February 1931		Post 03 Feb 1931	purchase.
100194	2023/2/3	View over Ahuriri lagoon with refugees from Tangoio Pā on Westshore Embankment Road		Post 03 Feb 1931	purchase.
100195	2023/2/4	Damaged Wairoa River Bridge 1931		Post 03 Feb 1931	purchase.
100196	2023/2/5	Displaced people at railway station		Post 03 Feb 1931	purchase.
100197	2023/2/6	Refugees from Tangoio Pā resting on side of road		Post 03 Feb 1931	purchase.
100198	2023/2/7	Damage to Waipukurau Post Office		Post 03 Feb 1931	purchase.

System ID	Accession No	Name/Title	Primary Maker (name only)	Primary Prod Date	Credit Line
100199	2023/2/8	Damage in main street of Waipawa		Post 03 Feb 1931	purchase.
100200	2023/2/9	Napier sewer line in Ahuriri lagoon		Post 03 Feb 1931	purchase.
100201	2023/2/10	Wairoa Freezing Works, damaged by fire		Post 03 Feb 1931	purchase.
100202	2023/2/11	Queuing to send telegrams at a temporary Post Office in Napier		Post 03 Feb 1931	purchase.
100203	2023/2/12	Officials at a Napier relief camp		Post 03 Feb 1931	purchase.
100204	2023/2/13	Damage to wharf, Port Ahuriri		Post 03 Feb 1931	purchase.
100205	2023/2/14	Refugees from Tangoio Pā at a food depot in Napier		Post 03 Feb 1931	purchase.
100206	2023/2/15	Prams for Hawkes's Bay mothers collected at a Christchurch Relief Depot		Post 03 Feb 1931	purchase.
100207	2023/2/16	Misplaced child Elizabeth Gray at the Commercial Traveller's Relief Depot, Christchurch		Post 03 Feb 1931	purchase.
100208	2023/2/17	Raising funds for Earthquake relief in Christchurch		Post 03 Feb 1931	purchase.
100209	2023/2/18	Interior of Plowman's spice factory, Napier, after an earthquake on 5th May 1932	Percy Caz Sorrell	Post 03 Feb 1931	purchase.
100210	2023/2/19	Damaged machinery at Clive Freezing Works		Post 03 Feb 1931	purchase.
100211	2023/2/20	Bricklayer mixing cement in a bath		Post 03 Feb 1931	purchase.
100212	2023/2/21	Officers and men from the Taranaki, with a plaque presented for their services after the earthquake		Post 03 Feb 1931	purchase.
100213	2023/2/22	Relief camp food service		Post 03 Feb 1931	purchase.
100214	2023/2/23	Bus at refugee camp		Post 03 Feb 1931	purchase.
100215	2023/2/24	Staff and customers in a temporary grocery store, Hastings		Post 03 Feb 1931	purchase.
100216	2023/2/25	Relief food distribution notice 9 Feb 1931		Post 03 Feb 1931	purchase.
100217	2023/2/26	Man at damaged telephone booth, Wairoa		Post 03 Feb 1931	purchase.
100218	2023/2/27	Workmen clearing debris outside wrecked garage, Marine Parade, Wairoa	The Auckland Weekly News	Post 03 Feb 1931	purchase.
100219	2023/3/1	Bowl	Lucie Rie		gifted by Valerie Hart
100220	2023/3/2	Jug	Lucie Rie		gifted by Valerie Hart
100221	2023/3/3	Container and lid	Lucie Rie		gifted by Valerie Hart
100190	2023/4/1	Untitled, rural scene with doves	Desmond Helmore		purchased by Hawke's Bay Museums Trust with funds kindly donated by Roger and Liffy King

System ID	Accession No	Name/Title	Primary Maker (name only)	Primary Prod Date	Credit Line
100191	2023/4/2	Tokaanu Swamp, Taupo	Desmond Helmore		purchased by Hawke's Bay Museums Trust with funds kindly donated by Roger and Liffy King
100236	2023/5/1	Magazine, NZ Farmer, The Harvest of Our Orchards, June 1914	The New Zealand Farmer	Jun 1914	gifted by Nicki Bower
100237	2023/5/2	Magazine, The New Zealand Farmer, Volume XXXIV, No. 9, September 1913	The New Zealand Farmer	Sep 1913	gifted by Nicki Bower
100239	2023/5/3	Magazine, The New Zealand Farmer, July 1914	The New Zealand Farmer	Jul 1914	gifted by Nicki Bower
100240	2023/5/4	Magazine, The New Zealand Farmer, Volume XXXIV, No. 6, June 1913	The New Zealand Farmer	Jun 1913	gifted by Nicki Bower
100241	2023/5/5	Magazine, The New Zealand Farmer, Volume XXXIV, No. 5, May 1913	The New Zealand Farmer	May 1913	gifted by Nicki Bower
100242	2023/5/6	Magazine, The New Zealand Farmer, Volume XXX, No. 1, January 1909	The New Zealand Farmer	Jan 1909	gifted by Nicki Bower
100238	2023/5/7	Magazine, The New Zealand Farmer, Volume XXXI, No. 10, October 1910	The New Zealand Farmer	Oct 1910	gifted by Nicki Bower
100243	2023/5/8	Magazine, The New Zealand Farmer, Volume XXXIII, No. 7, July 1912	The New Zealand Farmer	Jul 1912	gifted by Nicki Bower
100234	2023/6	Sheet music 'The Mardi Gras March'	Clement Roy Spackman; Napier Thirty Thousand Club; G W Venables & Co Ltd	1913	gifted by Gay Reid
100229	2023/7/1	Central HB Cyclone Relief T-Shirt	Stroker's Screen Printing Limited; Katrina Boyce	2023	purchase
100230	2023/7/2	Wairoa Cyclone Relief T-Shirt	Stroker's Screen Printing Limited; Katrina Boyce	2023	purchase
100231	2023/7/3	Kaweka Ward Cyclone Relief T-Shirt	Stroker's Screen Printing Limited; Katrina Boyce	2023	purchase
100232	2023/7/4	Pākōwhai Cyclone Relief T-Shirt	Stroker's Screen Printing Limited; Katrina Boyce	2023	purchase
100233	2023/7/5	Esk Valley Cyclone Relief T-Shirt	Stroker's Screen Printing Limited; Katrina Boyce	2023	purchase
100244	2023/8/1	Magazine, The Illustrated War News, bound set, Aug-Dec 1914	The Illustrated London News	1914	gifted by Katherine Rawstron
100245	2023/8/2	Magazine, The Illustrated War News, bound set, Jan-Mar 1916	The Illustrated London News	1916	gifted by Katherine Rawstron
100246	2023/8/3	Magazine, The Illustrated War News, bound set, Apr-Jun 1915	The Illustrated London News	1915	gifted by Katherine Rawstron
100247	2023/8/4	Magazine, The Illustrated War News, bound set, Jan-Mar 1917	The Illustrated London News	1917	gifted by Katherine Rawstron
100248	2023/8/5	Magazine, The Illustrated War News, bound set, Jan-Apr 1918, Jun-Aug 1916	The Illustrated London News	1916; 1918	gifted by Katherine Rawstron

System ID	Accession No	Name/Title	Primary Maker (name only)	Primary Prod Date	Credit Line
100249	2023/8/6	Magazine, The Illustrated War News, bound set, Apr-Jun 1916	The Illustrated London News	1916	gifted by Katherine Rawstron
100250	2023/8/7	Magazine, The Illustrated War News, bound set, Jan-Mar 1915	The Illustrated London News	1915	gifted by Katherine Rawstron
100251	2023/8/8	Magazine, The Illustrated War News, bound set, Jul-Sep 1915	The Illustrated London News	1915	gifted by Katherine Rawstron
100252	2023/8/9	Magazine, The Illustrated War News, bound set, Oct-Dec 1915	The Illustrated London News	1915	gifted by Katherine Rawstron
100253	2023/8/10	Magazine, The Illustrated War News, bound set, Apr-Aug 1917	The Illustrated London News	1917	gifted by Katherine Rawstron
100254	2023/8/11	Magazine, The Illustrated War News, bound set, Sep-Dec 1916	The Illustrated London News	1916	gifted by Katherine Rawstron
100257	2023/9	Kotiate parāoa			gifted by Andy Lockie
100258	2023/10/1	Dress	Minh Ta		gifted by Sue Taylor
100259	2023/10/2	Dress	Minh Ta		gifted by Sue Taylor
100260	2023/10/3	Jacket	Minh Ta		gifted by Sue Taylor
100262	2023/11/1	Untitled, view towards Ngātapa Pā			gifted by Janet Williams
100263	2023/11/2	Untitled, view of encampment scene			gifted by Janet Williams
100256	2023/12	Pungapunga	Atareta Black; Atareta Black	2022	gifted by the MTG Foundation
100261	2023/13	Mahuru	Maioha Kara	2023	gifted by the MTG Foundation
100264	2023/14/1	Portrait, Robert John Sweetapple, Napier, NZ	Dianne Caroline Murray	1988	Gifted by Betty Maree Sweetapple. Reproduced by kind permission of Betty Maree Sweetapple.
100265	2023/14/2	Portrait, Betty Ellen Sweetapple, nee McCartin, Napier, NZ	Dianne Caroline Murray	1988	Gifted by Betty Maree Sweetapple. Reproduced by kind permission of Betty Maree Sweetapple.
100266	2023/16	Tapa Tenderizer comb	Selina Woulfe	2014	gifted by the MTG Foundation
100267	2023/17	Katinia, 2022	Serene Hodgman	2022	gifted by the MTG Foundation

Image reproduction requests are in progress on these works. Copyright restrictions apply to images of these works:

Billy Apple® (T147), 2008, Billy Apple (b.1935, d.2021), gifted by the MTG Foundation, collection of Hawke's Bay Museums Trust, Ruawhoro Tā-ū-rangi, 2022/17. All rights reserved.

(Note: if you wish to use this image the proof of the annual report will need to be run past the copyright holder first via Sara Perrett)

Madonna, design drawing for stained glass window, 1980s, Phyllis Simmonds (b.1932, d.2020), gifted by Louise Walsh, Darryl and Lee Simmonds, collection of Hawke's Bay Museums Trust, Ruawhoro Tā-ū-rangi, 2022/21/19. All Rights Reserved.

Silk dress, 1960s, Babs Radôn, gifted by Beverley Werry, collection of Hawke's Bay Museums Trust, Ruawhoro Tā-ū-rangi, 2022/23/1. All rights reserved.

Sari dress, 1970s, Roswitha Robertson (b.1928, d.2021), gifted by Rosalind Harker, collection of Hawke's Bay Museums Trust, Ruawhoro Tā-ū-rangi, 2022/28/1. All Rights Reserved.

Gravity MRR (Red), 1999, Neil Frazer (b.1961), gifted by Neil Frazer. Courtesy of Milford Galleries Dunedin, reproduced by Kind Permission of Neil Frazer and Milford Galleries Dunedin, Collection of Hawke's Bay Museums Trust, Ruawhoro Tā-ū-rangi, 2022/34. All Rights Reserved.

Ōtātara Pā, 2022, Russ Flatt (b.1971), purchase, collection of Hawke's Bay Museums Trust, Ruawhoro Tā-ū-rangi, 2022/36/2. All rights reserved.

Heretaunga Māori Choir, 1938, Sidney Riley Studios (active 1911-1946), gifted by Tricia Glensor, collection of Hawke's Bay Museums Trust, Ruawhoro Tā-ū-rangi, 2022/37/2. Public Domain.

Illuminated address, presented to Walter John Yarrall by staff from the Napier Railway Workshops, 1910s, gifted by Margaret Tyrrell, collection of Hawke's Bay Museums Trust, Ruawhoro Tā-ū-rangi, 2022/44. Public Domain.

Raising funds for Earthquake relief in Christchurch, 1930s, collection of Hawke's Bay Museums Trust, Ruawhoro Tā-ū-rangi, 2023/2/17. Public Domain

Damaged machinery at Clive Freezing Works, 1930s, purchase, collection of Hawke's Bay Museums Trust, Ruawhoro Tā-ū-rangi, 2023/2/19. Public Domain.

Mahuru, 2023, Maioha Kara, gifted by the MTG Foundation, collection of Hawke's Bay Museums Trust, Ruawhoro Tā-ū-rangi, 2023/13. All rights reserved.

Hawke's Bay Museums Trust
Annual Report
for the year ended 30 June 2023



Hawke's Bay Museums Trust
Ruawharo Tā-ū-rangi